

BOAT  
CLUB





*Actual view from 219 Boat Club*





# C O N T E N T S

01 /  
FOREWORD

02 /  
LOCATION

03 /  
ENDLESS  
SPACE

04 /  
SERVICES

05 /  
AMENITIES

06 /  
ISOMETRIC  
VIEW

07 /  
TEAM



# 219 BOAT CLUB IS CONCEPTUALIZED AND DESIGNED BY THE ARCHITECTURAL FIRM BEST KNOWN FOR THE BURJ AL ARAB: ATKINS

---

219 Boat Club is a project by Merint Developers, a part of the prestigious Merint Group. The famed glass distributors' work spans from the most stylish designer stores to illustrious buildings such as the Aspire Tower in Doha, the Concord Tower, The Emirates Towers in Dubai and more.

The Merint Group of Companies recently developed the acclaimed Merint Ski Village in Wisla, Poland.







01

# FOREWORD

“IT IS THE FINE EXCESSES  
OF LIFE THAT MAKE IT  
WORTH LIVING.”

— Richard Le Gallienne





Render of 219 Boat Club as seen from the exterior

# 219 / BOAT CLUB

219 Boat Club is a residence that is defined by its abundance of space and distinguished by its emphasis on both sophistication and functionality. Being a Merint property, it showcases a vision that combines the world's most exclusive glass with the most exquisite design aesthetic.

Intended for those who appreciate the finer things in life, the building provides access to impressive height, incomparable space and incredible views.

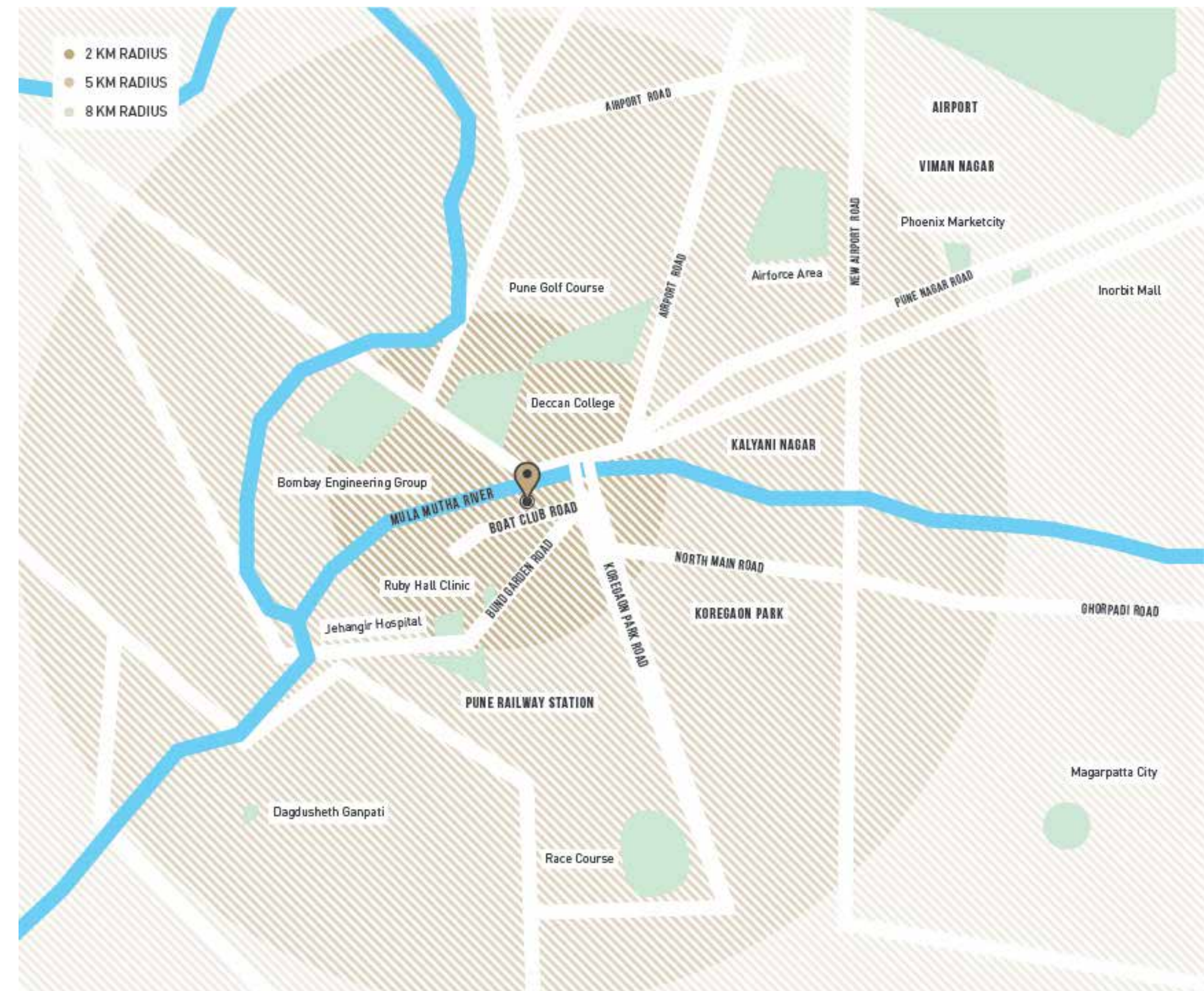


02

“THE 3 MOST IMPORTANT FACTORS  
IN BUYING A HOME ARE

LOCATION  
LOCATION  
LOCATION”

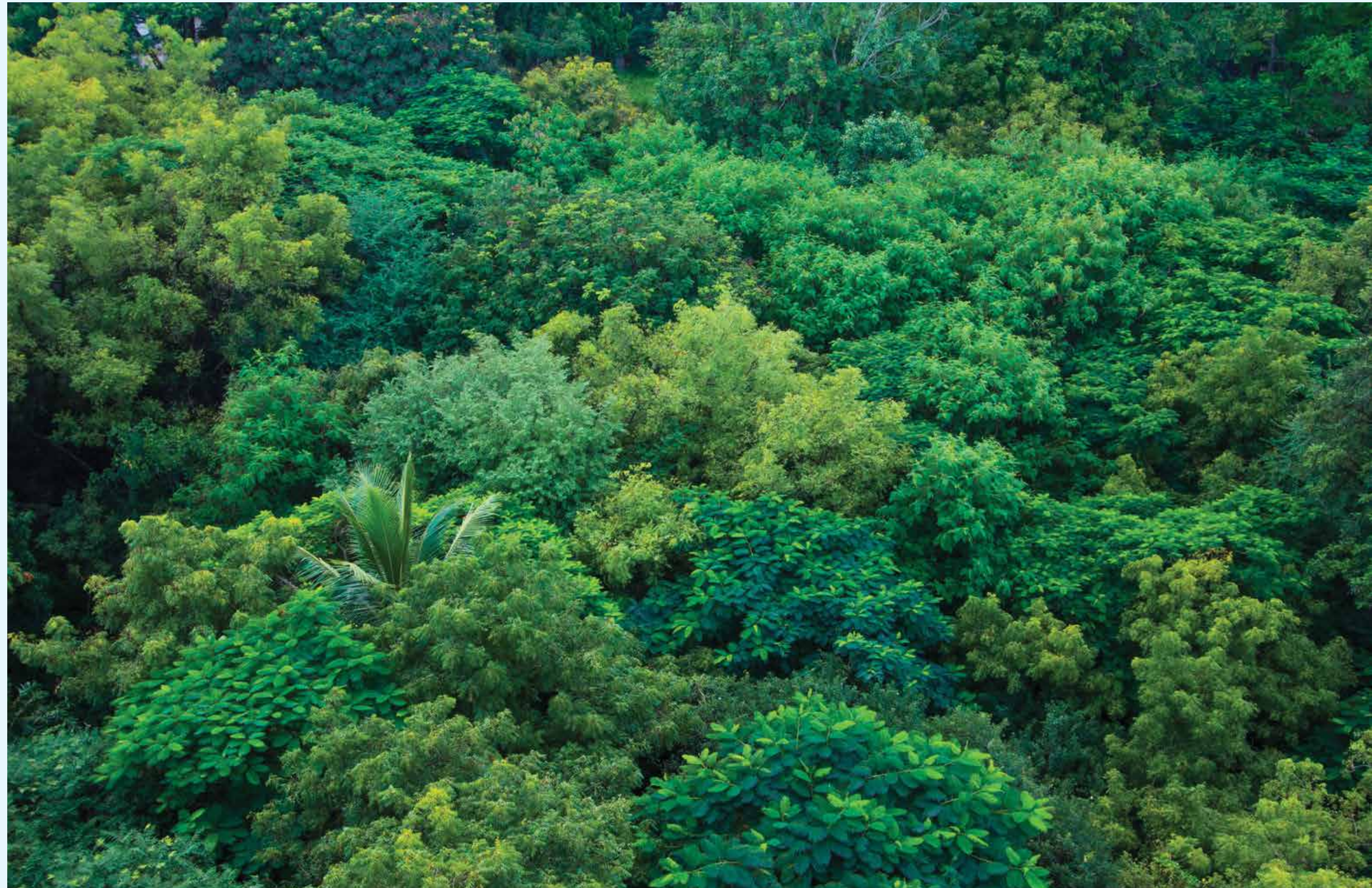
— Lord Samuel





03

ENDLESS  
SPACE



*Actual view of the green expanses from the 7th floor of 219 Boat Club*

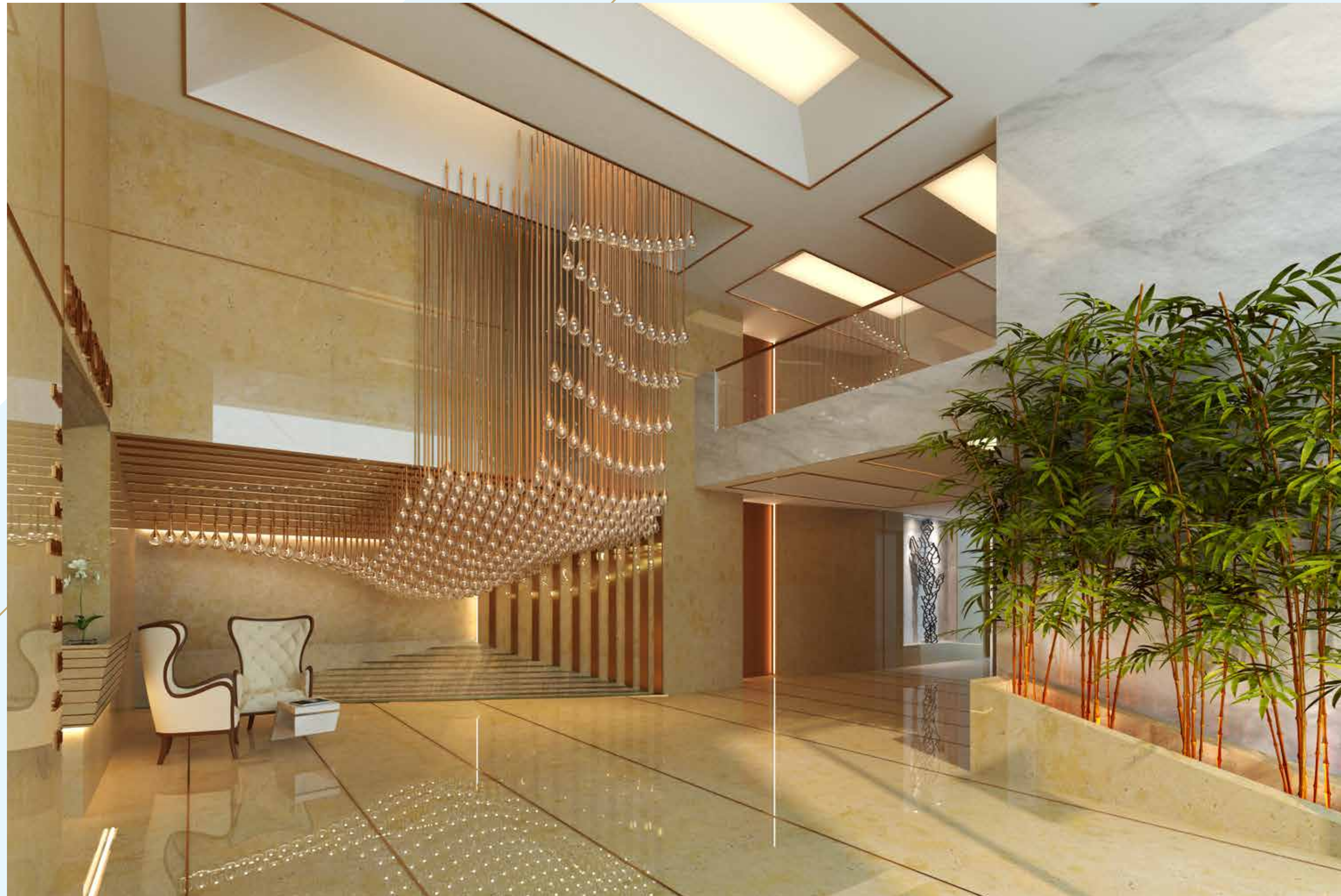




An interactive glass sculpture in the lobby is made up of 361 hand-blown, responsive LED lights that create a sense of movement.

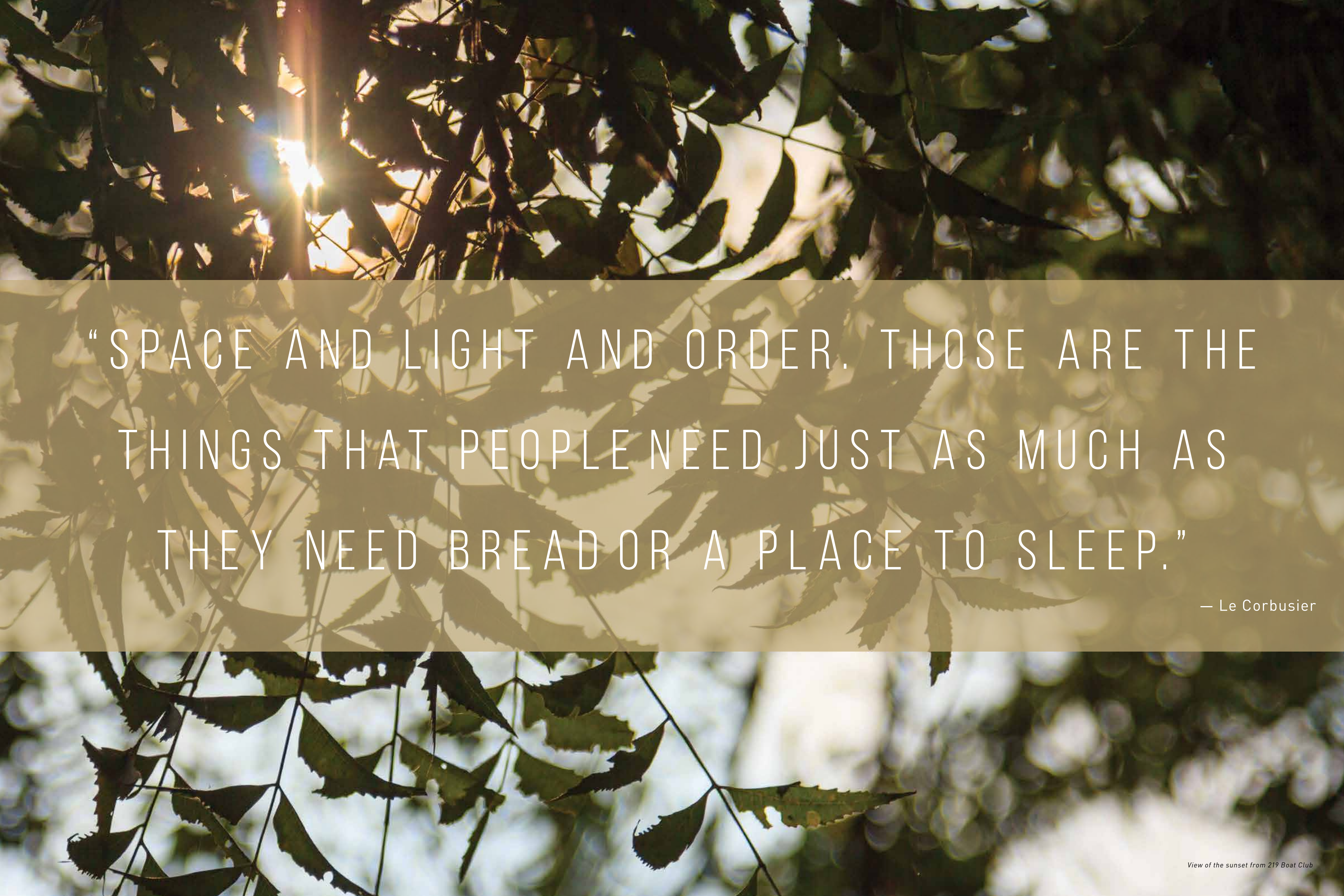
## LOBBY

A union of the organic and the built environment, residents are greeted by an idyllic lobby that makes them feel at ease. Adorned by a 20 ft. water curtain, an effervescent living wall, a transcendent garden and a reflecting lily pond – it's the perfect way to start the day.



*Render of the lobby as viewed from the entrance*





“SPACE AND LIGHT AND ORDER. THOSE ARE THE  
THINGS THAT PEOPLE NEED JUST AS MUCH AS  
THEY NEED BREAD OR A PLACE TO SLEEP.”

— Le Corbusier



# 10 LIMITED EDITION APARTMENTS

A hidden sanctuary in the heart of the city, 219 Boat Club has 10 luxury apartments. Each home is designed with an abundance of natural light and glass that accentuate the sprawling 8,000 sq. ft. space.



View of the north facing balconies.

8,000 SQ. FT. VAASTU  
COMPLIANT HOMES



22 FT.

# HIGH CEILINGS



Render of the spacious living room

Majestic windows span the height of two floors, presenting residents with sweeping views of the expansive greenery. Beyond your spacious interiors lies a private pool deck where you can bask in the glow of the sunset.



Look out at the inviting landscapes and the grandeur of nature,  
as you lazily drift into your thoughts.



*Panoramic actual view from the rooftop of 219 Boat Club*



# MASTER BEDROOM

There isn't much that a good night's sleep can't resolve. Unwind in either of the two spacious master bedrooms.

Residents have the flexibility of arranging their apartments into 4, 5 or 6 bedroom homes.



Render of Master Bedroom - I

# VIEW

Actual view from the 4th Floor Master Bedroom.





# BATHROOM

With open wardrobes attached to the bathrooms, get ready for every special occasion in style.



Actual view from the sunken jacuzzi in Master Bedroom II

## SUNKEN JACUZZI

With stunning views of the surrounding greenery, the sunken jacuzzis provide an incomparable, intimate experience.



Render of the opulent washroom in Master Bedroom I





“LUXURY IS ATTENTION TO DETAIL, ORIGINALITY,  
EXCLUSIVITY AND ABOVE ALL QUALITY.”

— Angelo Bonati





Render of the private pools from the north east corner of 219 Boat Club

# 25 FT. PRIVATE POOL

An oasis that grants solitude as well as serenity, it's the best way to disconnect from everyday life.



View from the private pool in each apartment





Render of the Kone elevators at 219 Boat Club

# SERVICES

The building has been planned to have dedicated service entrances and elevators. Each apartment comes with sanctioned staff quarters, 3 parking spaces and shared visitors parking.

OTHER SERVICES INCLUDE:

- |                                  |  |   |
|----------------------------------|--|---|
| A store room of upto 200 sq. ft. | Daikin VRV air conditioning units provided | Multi-point security and access control systems |
| 100% generator backup            | Cinema room for residents                  | Driver's accommodation                          |



05

# AMENITIES



Residents with myriad tastes for entertainment, recreation and leisure have access to expansive gardens, a gymnasium, a cinema room, a rooftop terrace and a party area with an attached service kitchenette. A warm welcome awaits at the end of every day, as well as a promise of privacy and secured peace of mind.

36 FT.  
LONG POOL

*Render of the rooftop facilities available at  
219 Boat Club*



06

# ISOMETRIC VIEW

MAIN ENTRANCE  
SERVICE ENTRANCE



EVEN FLOOR VIEW





ODD FLOOR VIEW



# FLOOR PLAN



EVEN FLOOR 4.5 BHK







The background of the image is a dense, out-of-focus greenery. In the upper half, there are clusters of small, bright yellow flowers. In the lower right corner, there are clusters of vibrant red flowers. The overall lighting is soft and natural, suggesting a sunny day in a garden or park.

“COMING TOGETHER IS A BEGINNING. KEEPING  
TOGETHER IS PROGRESS. WORKING TOGETHER  
IS SUCCESS.”

— Henry Ford



07

# TEAM



U.A.E | KINGDOM OF SAUDI ARABIA | QATAR  
INDIA | KENYA | POLAND

Our group of companies in the United Arab Emirates comprises Merint Contracting, Merint International Contracting, Merint Technical Services, Merint Furniture Factory and Merint Doors.

New Merchants' International, Merint Developers, Merint Industrial Infrastructure, Merint Molecular Imaging and Merint SP Z.O.O. are a part of the Merint Group and are present in the Kingdom of Saudi Arabia, India, and Poland.

## ATKINS

PLAN | DESIGN | ENABLE

British multinational design, engineering firm  
established in 1938 and among the top 15 worldwide (2014)



## HINGE

studio HINGE

ARCHITECTURE | INTERIORS | FURNITURE



FOURTH DIMENSION ARCHITECTS PRIVATE LIMITED

EXPERTISE | EXPERIENCE | FOCUS | DEDICATION

Architects with innovation and passion creating  
benchmarks in architecture and design.





022-222222222 | [www.boatclub.com](http://www.boatclub.com)  
219, Boat Club Rd, Bund Garden, Sangamvadi,  
Pune, Maharashtra 411001

#### DISCLAIMER

The contents and information displayed in this brochure are intended for general marketing purposes only and are subject to change. Employees, agents and other representatives will not accept any liability suffered or incurred by any person arising out of dependence on information in this brochure. This limitation applies to loss or damage of any kind, including but not limited to compensatory, direct, indirect or consequential damage, loss of income or profit, loss of or damage to property and claims by third party.

DESIGNED BY PLEASE SEE//  
PRINTED AT RAKESH PRESS



